



# SUSITNA-WATANA HYDROELECTRIC PROJECT

## Recreation & Aesthetics TWG Meeting June 12, 2013



# Recreation Study

## 2013

- Identify and document **recreation resources and facilities**  
Identify the types and levels of **current recreational uses**

## 2014

- Identify future **reasonably foreseeable future uses**
- Evaluate the **potential impacts** of Project construction and operation on recreation resources, needs, and uses
- Develop data to inform AEA's future development of a **Recreation Management Plan** for the Project.

# Baseline Recreation Setting Characteristics

Setting		Data Source
<b>PHYSICAL:</b> Qualities of the Landscape	Remoteness / Accessibility Naturalness Facilities / Infrastructure	<ul style="list-style-type: none"> <li>• Access / Trails</li> <li>• Facilities</li> <li>• Aesthetics</li> </ul>
<b>SOCIAL</b> Qualities associated with Use	Use Contacts / Potential Conflict Group Size Evidence of Use	<ul style="list-style-type: none"> <li>• Use &amp; Demand</li> <li>• Dispersed Recreation</li> <li>• Trails</li> </ul>
<b>OPERATIONAL</b> Ownership /Management Controls; Commercial Uses; Consumptive Uses	Public Access Visitor Services / Information Management Controls	<ul style="list-style-type: none"> <li>• Regional Recreation Analysis</li> <li>• Commercial / Non-Commercial Recreation Use</li> <li>• Trails</li> <li>• Hunting / Fishing</li> </ul>

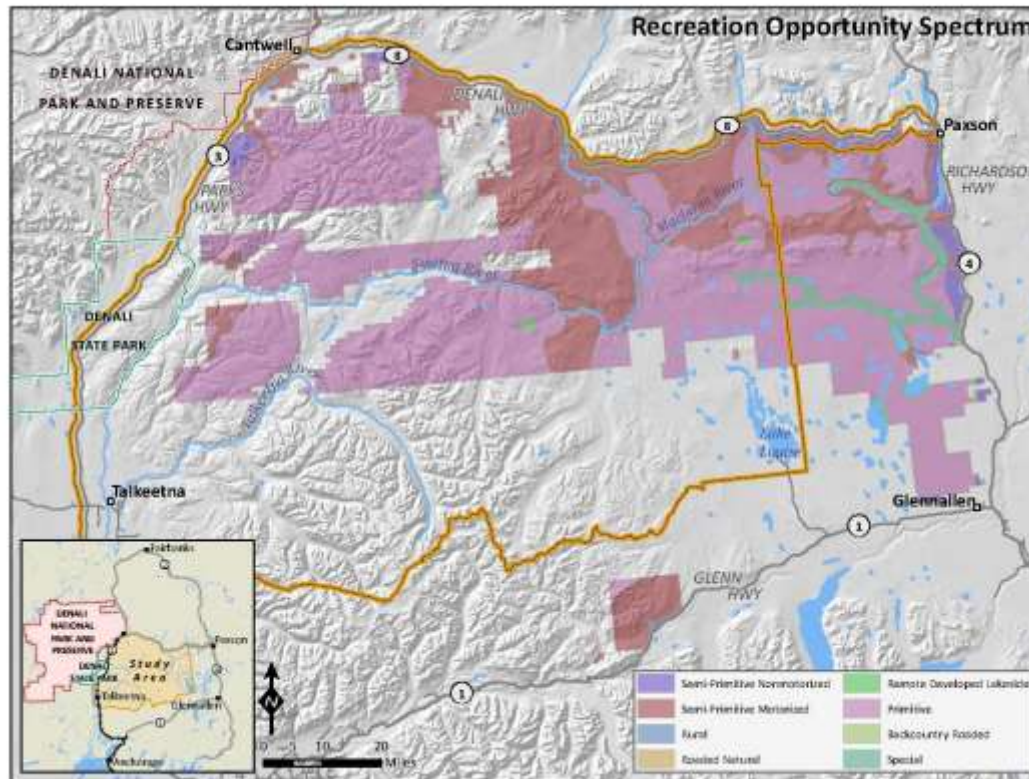
# Recreation Study Overview Map



# Baseline Characteristics - Physical

Remoteness / Accessibility; Naturalness; Facilities / Infrastructure

- Regional Recreation Analysis
- Recreation Use Areas (SRMS, ROS)



# Baseline Characteristics - Physical

Remoteness / Accessibility; Naturalness; Facilities / Infrastructure

- Access Inventory (ongoing)
- Trails Inventory (ongoing)
  - Data collection ongoing
  - Mapping & Classification to begin in July 2013



# Baseline Characteristics - Physical

Remoteness / Accessibility; Naturalness; Facilities / Infrastructure

- **Facilities Mapping & Inventory**
  - Mapping Underway
  - Inventory to begin July 2013
  
- **Aesthetics**
  - Data collection ongoing
  - Naturalness Criteria
  - Soundscape



# Baseline Characteristics - Social

Qualities Associated with Use: Use, Contacts / Potential Conflict, Group Size, Evidence of Use

- **Executive Interviews (2013)**
  - Winter recreation providers/ recreationists
  - Coordinating interviews across all sub-disciplines
  - Data Management
- **Dispersed Recreation Inventory (Fall 2013)**
- **Recreation Surveys (2013-2014)**
  - Intercept Survey
  - Mail Survey



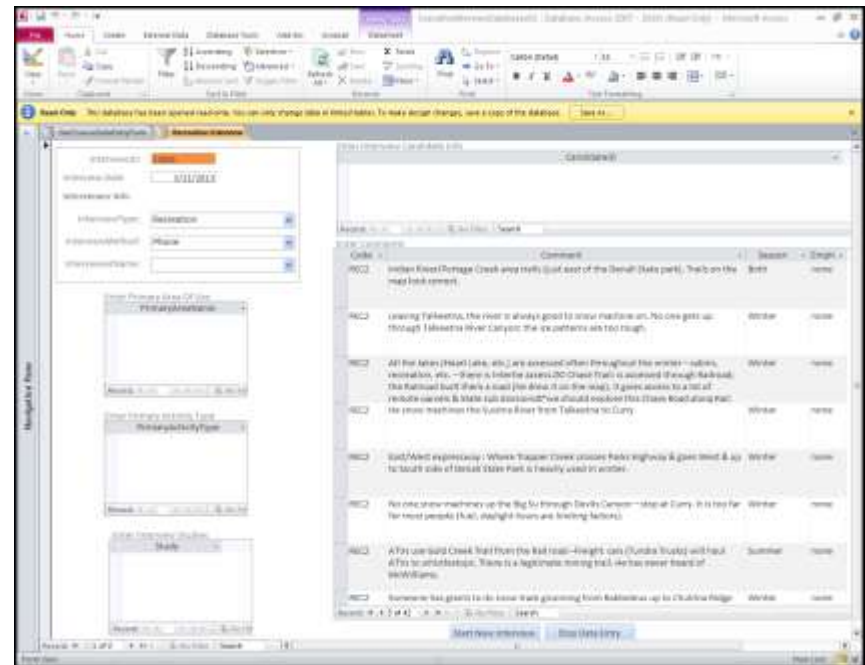
# Executive Interviews

- Interviews Implemented (first iteration)
- Geographical coverage
  - Lake Louise, Denali Hwy, Parks Hwy, Talkeetna
- Entities included
  - BLM, ADFG, and ADNR
  - Lodge owners and private pilots
  - Clubs and tours
  - Individual skiers, dog mushers, and snow machiners
  - Event organizers
  - Hunters, trappers, and trapping associations

# Executive Interviews

## Data Management

- Executive Interview Database
- Database developed to archive and analyze information
- Spatially explicit
- Includes all components of Recreation and Aesthetics Program
  - Recreation,
  - Use & Demand,
  - Aesthetics,
  - River Recreation



# Recreation Surveys

## Submissions to FERC (April 15, 2013)

- Response to Stakeholder Comments
- Final intercept survey instrument
- Final mail survey instrument

# Recreation Use - Baseline

- Intercept Survey
  - Pre-tested in mid-March
  - Completed ~380 surveys (as of May 22)
  - 12 surveyors (5-6 crews), originating from Fairbanks, Talkeetna, Lake Louise, Palmer, and Anchorage
  - Fielding in Talkeetna, Lake Louise, Paxson, Parks Highway (Y-Cantwell), East and West Denali Highway (maintained sections)

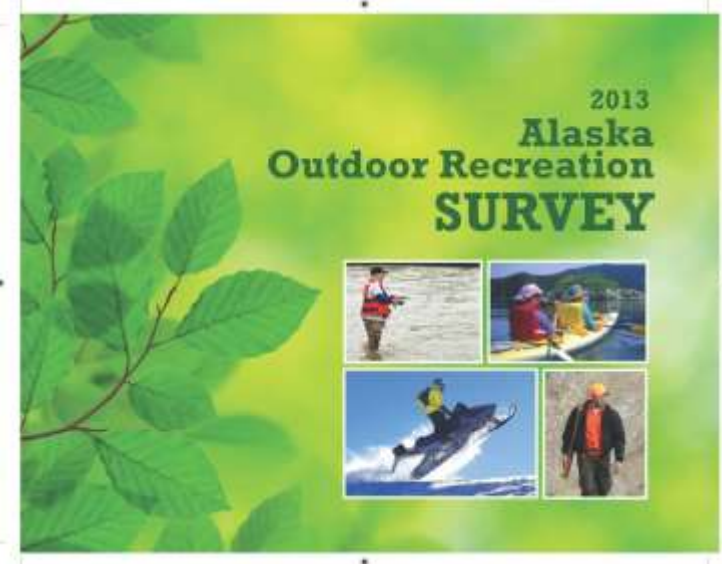
# Recreation Surveys

- Intercept Survey (continued)
  - Completed ~600 observational intercept tallies (as of May 22)
  - “Leave Behind Cards” distribution started in May (online survey)
  - Winter field season extended to end of May
  - Data entry ongoing



# Recreation Surveys

- 1st mail survey mailing (7,500 households)
  - May 28: Pre-mailer postcard mailed
  - June 3: Survey booklet (16 pages) mailed
  - June 17: Initial due date
  - June 21: Second mailing to nonrespondents
  - July 12: Final due date
- 2nd mail survey mailing in October (+ 7,500)



# Baseline Characteristics - Administrative

Ownership / Management Controls; Commercial Uses; Consumptive Uses

- Regional Recreation Analysis
- Commercial Recreation Use
- Land Ownership
- Hunting / Fishing Regulations

# P2 – 2013 Work

- Interdisciplinary Coordination
  - Aesthetics, River Recreation, Socioeconomics, Social Conditions and Public Goods and Services, Transportation
- Trails/Route identification, ground truthing, mapping at 1:24,000
- Facilities inventory & evaluation
- Access Point Inventory & mapping
- Dispersed Recreation Site inventory
- NRRS data management design



# 2014 Work

- Analyze baseline data (primary data)
- Identify future reasonably foreseeable future uses
- Evaluate the potential impacts of Project construction and operation
- Assess change in Opportunities / Recreational Setting Characteristics
- Structure data to support development of a Recreation Management Plan