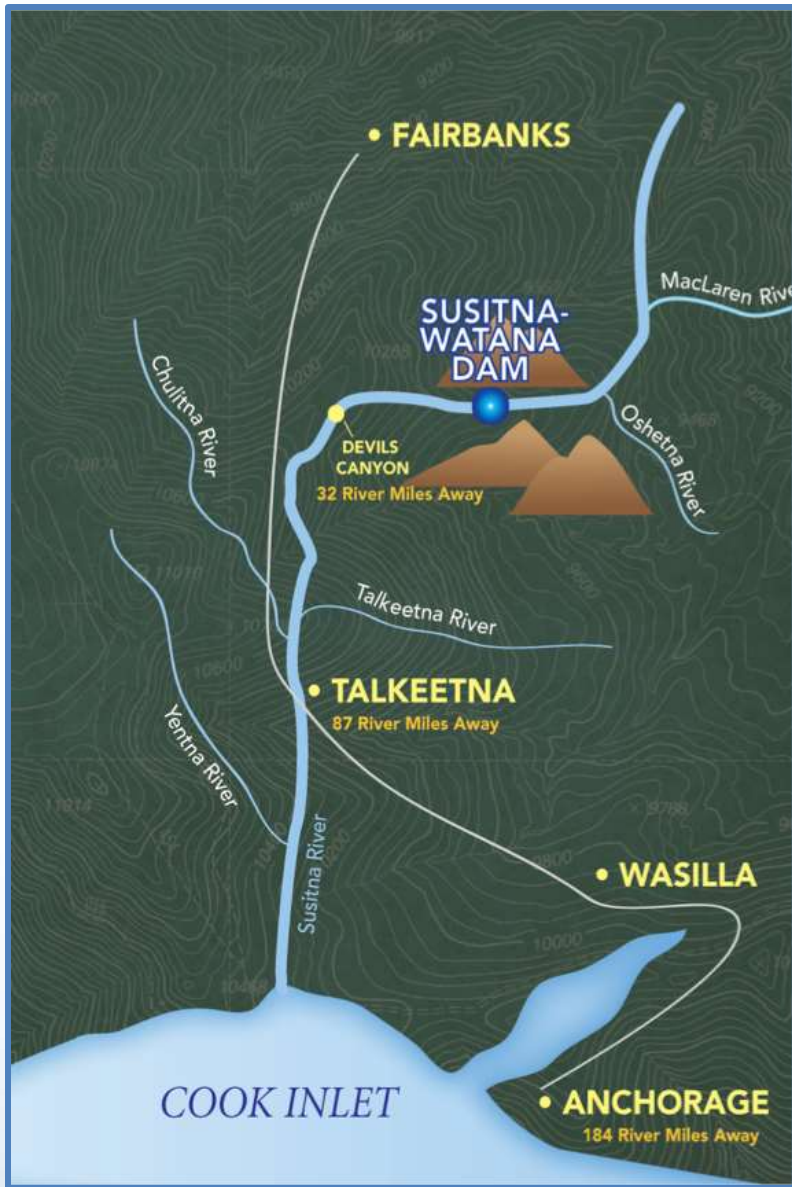


# Technical WorkGroup Meeting Q4 2013 TWG

## *Cultural and Paleontological Resources*

*November 7, 2013*

Prepared by:  
Charles M. Mobley & Associates  
Northern Land Use Research Alaska, Inc.  
URS, Inc.



# RSP 13.5 Cultural Resources

## Q4 2013 Progress

- *Archaeological Investigation*
- *Ethnogeography Investigation*
- *Paleoenvironmental Investigation – continued planning*

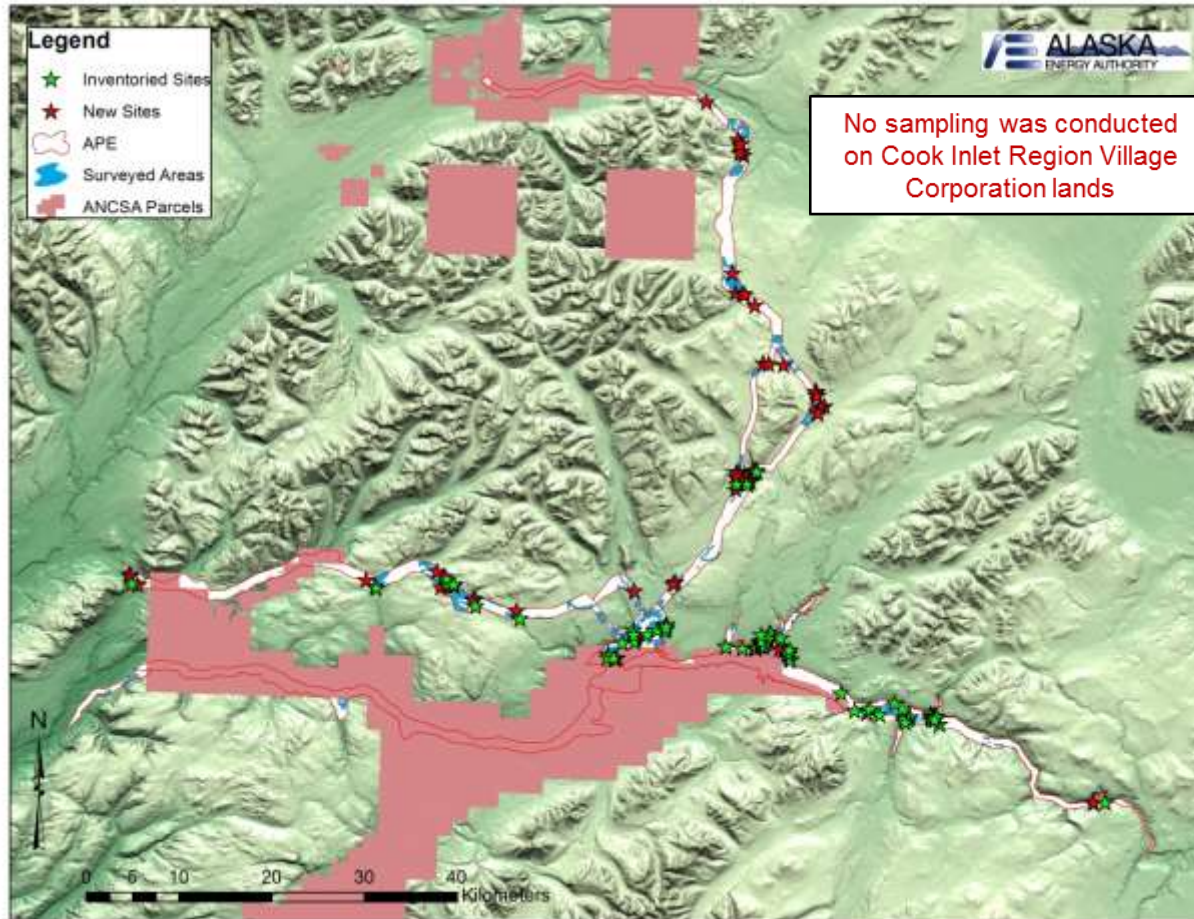
# RSP 13.5 Archaeological Investigation<sup>3</sup>

## **Current Status**

- *Revision of AHRS forms for known sites re-recorded in the study area for which access was permitted (81 sites).*
- *Completion of AHRS forms for new sites recorded in the study area for which access was permitted (118 sites).*
- *Cataloging of artifacts collected in 2013 (64 specimens: flake lots, tools, and fauna).*
- *Radiocarbon samples submitted (13 samples).*
- *Tephra samples (16 from Watana plateau)*
- *Obsidian source analysis (6 specimens – geochemically similar to Batza Tena source based on XRF is grouped as a potentially new source).*
- *Four fossils were collected or recorded along the Deadman watershed (2 bones, 1 leaf and 1 piece of petrified wood).*
- *Writing the Initial Study Report (ISR).*
- *Completion and submission of report to BLM in satisfaction of ARPA permit.*



# RSP 13.5 Archaeological Investigation<sup>4</sup>





# On-going Lab Work

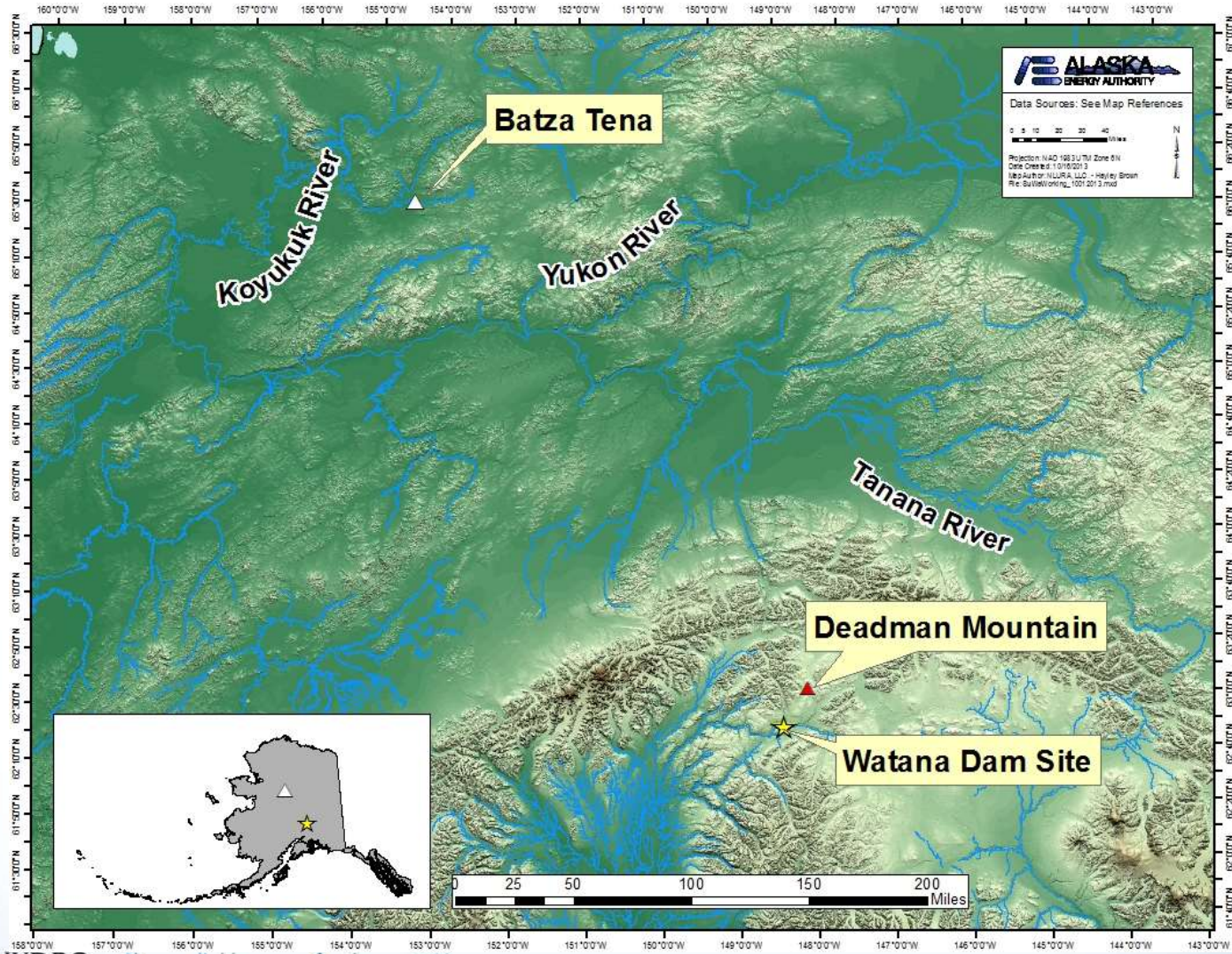
5

- Bone and faunal identification
- Lithic metrics, material type, description, tool type
- XRF characterization of obsidian trace elements
- Radiocarbon sample preparation
- Tephra sample preparation



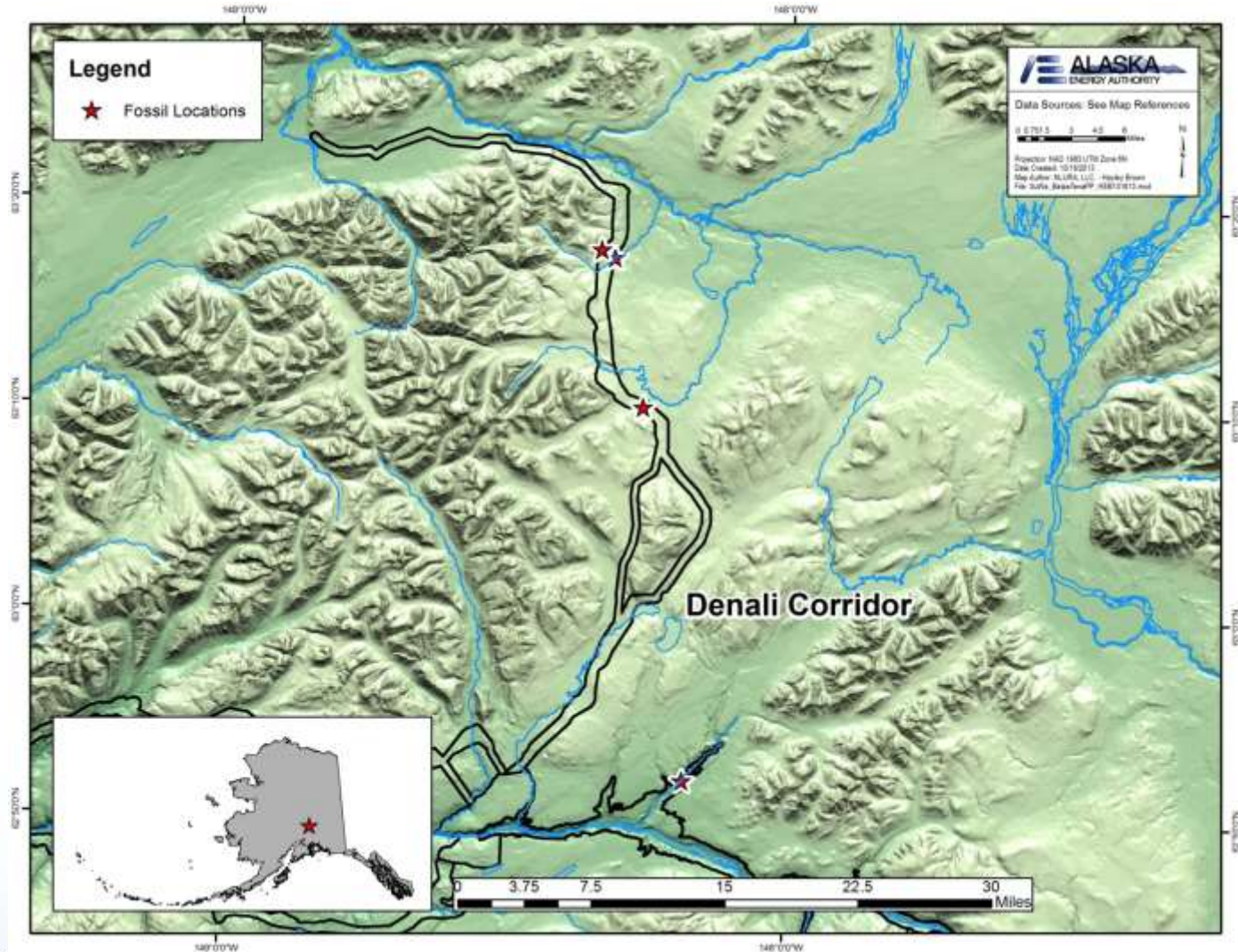


# Prehistoric Trade





# New Fossil Discoveries





# RSP 13.5 Archaeological Investigation<sup>9</sup>

## ***Cultural Site Distribution***

- *The surface site density is approximately twice what was suggested by the early 1980s investigations.*
- *The obsidian specimen from Batza Tena may indicates long-distance trade during prehistory.*
- *Alpine sites were not adequately surveyed in the early 1980s.*



# RSP 13.5 Archaeological Investigation<sup>10</sup>

## ***Variances***

- *No variances from the FERC-approved study plan.*



# RSP 13.5 Ethnogeography Investigation<sup>11</sup>

## Current Status

- *Synthesizing interview data.*
- *Mapping historical and contemporary land use patterns.*
- *Mapping historical village locations and traditional travel routes.*
- *Writing-up historical and cultural context.*



# RSP 13.5 Ethnogeography Investigation<sup>12</sup>

## ***Insights from the Ethnogeography Investigation***

- *The primary data set being assembled is rich in detail and will expand understanding of the area's history -- especially Ahtna history.*
- *A wealth of geographic information based largely on place name analysis will be newly available for the Project area.*



# RSP 13.5 Ethnogeography Investigation <sup>13</sup>

## ***Variances***

- *No variances from the approved study plan.*

# RSP 13.5 Cultural Resources – Next Steps

- *Archaeological Investigation*
  - *Complete analysis and prepare Initial Study Report (ISR).*
- *Ethnogeography Investigation*
  - *Complete analysis and prepare Interim Study Report (ISR).*
  - *Arrange second Ahtna elders meeting.*
- *Paleoenvironmental Investigation*
  - *continued planning to be reported in ISR*





# RSP 13.6 Paleontological Resources

- *Current planning for the 2014 paleontological investigation will be reported in the ISR.*

