

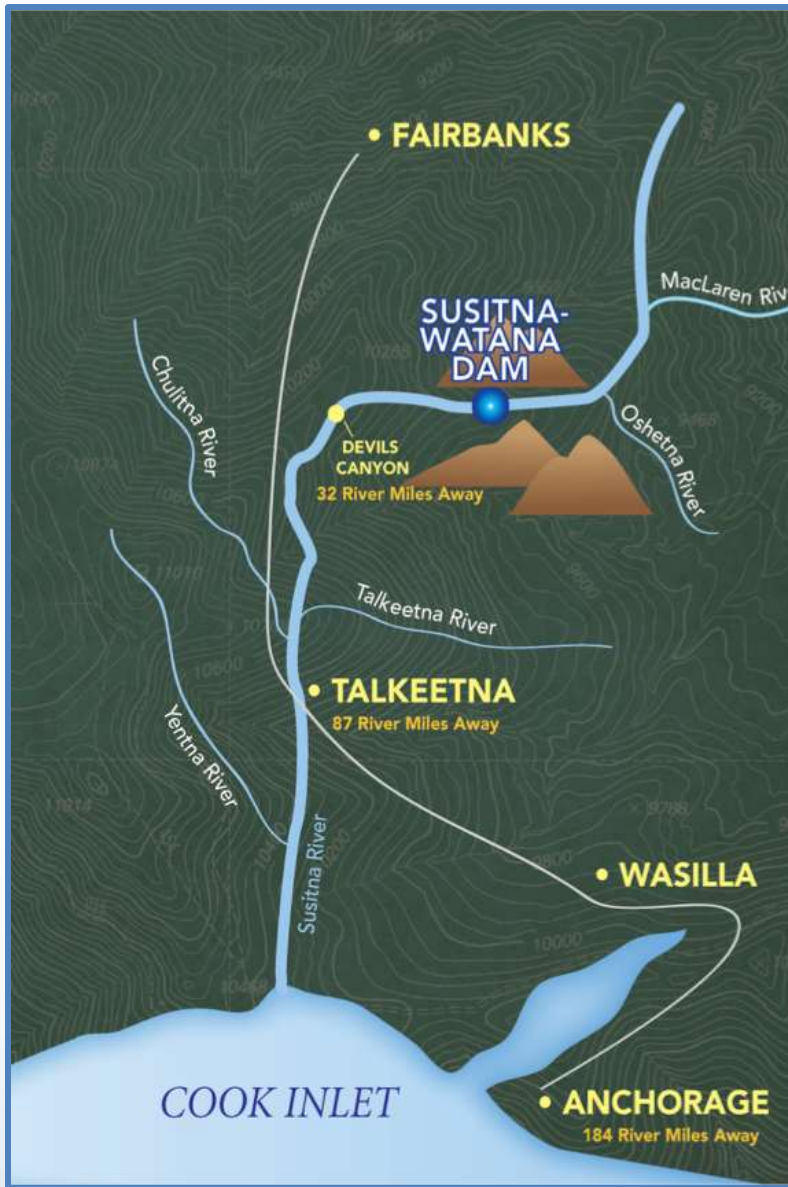
# Technical Team Meeting

## *Studies 9.5 & 9.6 Fish Distribution and Abundance:*

## *Review of Rotary Screw Trap Locations*

3/21/14

Prepared by R2 Resource  
Consultants, Inc.



## 9.5, 9.6 FDA Studies

*Objective: Consider relocating select traps to improve future catch*

- *Upper River*
  - *Catch in 2013*
  - *Potential to move the Kosina trap*
- *Middle/Lower River*
  - *Catch in 2013*
  - *Potential to move the Montana and Curry Traps*



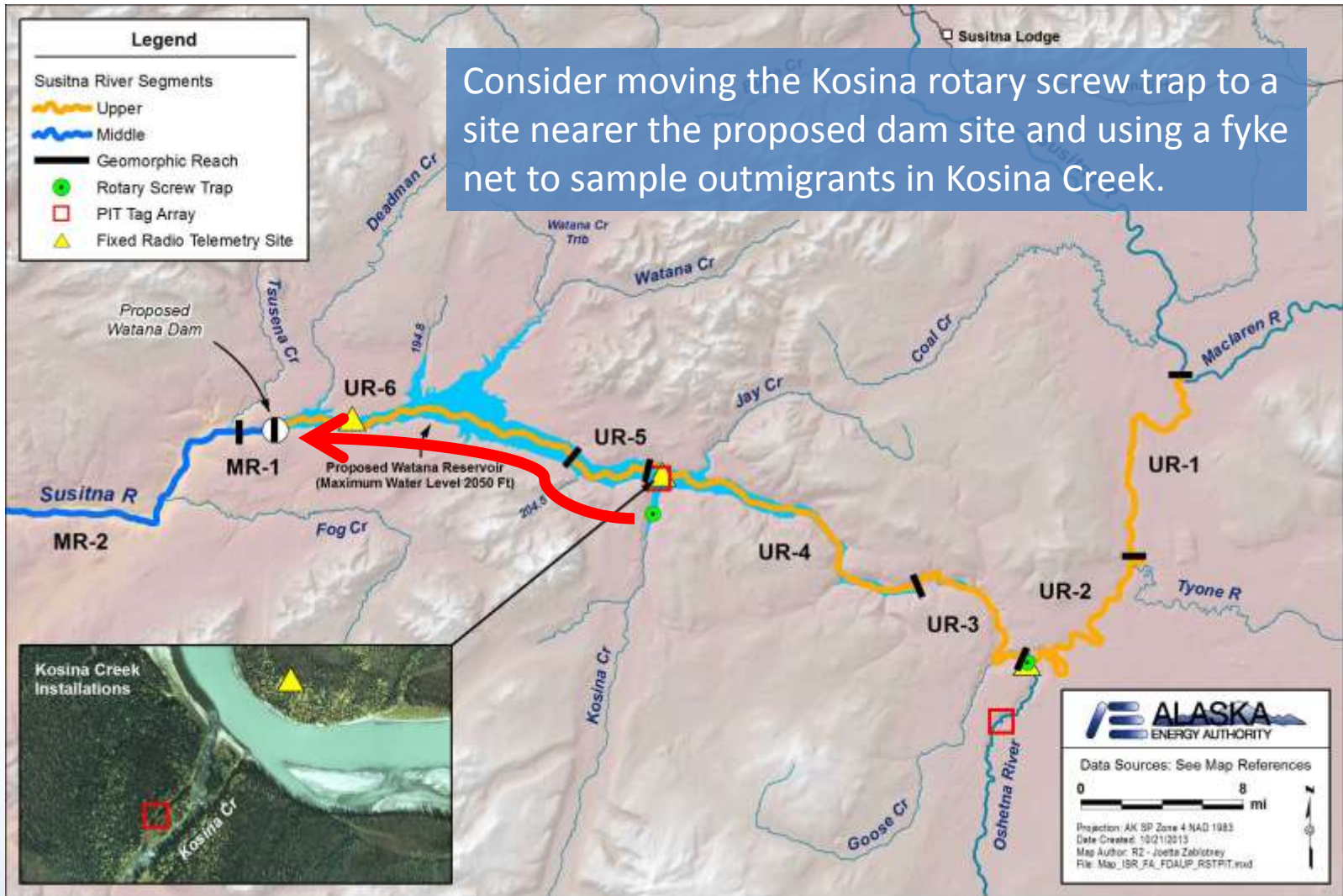
# 9.5, 9.6 FDA Studies

## 2013 Upper River Rotary Screw Trap Catch

Location	Geo Reach	PRM	Chinook salmon			Arctic grayling			Burbot		Dolly Varden		Longnose sucker			Sculpin		Whitefish, humpback		Whitefish, undifferentiated			Whitefish, round		Total
			Parr	Smolt	Adult	Juvenile	Juvenile/Adult	Adult	Juvenile	Juvenile/Adult	Juvenile/Adult	Adult	Juvenile	Juvenile/Adult	Adult	Juvenile	Juvenile/Adult	Juvenile	Juvenile/Adult	Juvenile	Juvenile/Adult	Juvenile	Juvenile/Adult	Adult	
Oshetna River	UR-2	235.1		1		233	335	38	3	1		97	42	46	11	21	38	5	5	12	33	34	39	7	1,001
Kosina Creek	UR-4	209.1	1	9	1	91	22	4			2		1		5		3		2	1	7		4		153
Total			1	10	1	324	357	42	3	1	2	97	43	46	16	21	41	5	7	13	40	34	43	7	1,154

# 9.5, 9.6 FDA Studies

Consider moving the Kosina rotary screw trap to a site nearer the proposed dam site and using a fyke net to sample outmigrants in Kosina Creek.



# 9.5, 9.6 FDA Studies

## 2013 Middle/Lower River Rotary Screw Trap Catch

Location	Geo Reach	PRM	Chinook salmon		Chum salmon		Coho salmon		Sockeye salmon		Pink salmon		Pacific salmon, undifferentiated	Arctic grayling	Burbot	Dolly Varden	Lamprey, undifferentiated	Longnose sucker	Rainbow trout	Salmonid, undifferentiated	Sculpin, undifferentiated	Threespine stickleback	Whitefish, humpback	Whitefish, round	Whitefish, undifferentiated	Total
			Adult	Juvenile	Adult	Juvenile	Adult	Juvenile	Adult	Juvenile	Adult	Juvenile														
Indian River	MR-6	142.1	9	567	85	150	47	1,745	2	289	655	411	37	72	3	23		20	101	2	294		7	25	7	4,551
Susitna River at Curry Station	MR-6	124	1	133	14	42	23	541	2	18	189	1	31	99	7	5		42	13		14	2	26	28	196	1,427
Susitna River at Talkeetna Station	MR-8	106.9	17	873	50	91	240	375	23	63	158	6	23	106	16	8	3	96	19	18	45	1	52	143	270	2,696
Montana Creek	LR-2	80.8	3	1,254	32	799	9	189			400	6	10	2		22	10	1	80		20	20		4		2,861
<b>Total</b>			<b>30</b>	<b>2,827</b>	<b>181</b>	<b>1,082</b>	<b>319</b>	<b>2,850</b>	<b>27</b>	<b>370</b>	<b>1,402</b>	<b>424</b>	<b>101</b>	<b>279</b>	<b>26</b>	<b>58</b>	<b>13</b>	<b>159</b>	<b>213</b>	<b>20</b>	<b>373</b>	<b>23</b>	<b>85</b>	<b>200</b>	<b>473</b>	<b>11,535</b>

# 9.5, 9.6 FDA Studies

